



Automatic/Manual changeover Panels IP65

Automatic

Fully automatic 4 pole mains/generator monitoring, controlled switching from loss of mains back to restored mains in timed sequence, generator starting facility, generator cooling run on, adjustable mains/generator monitoring parameters.

Manual

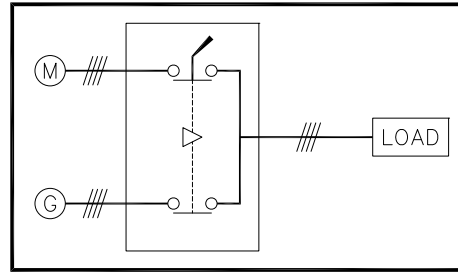
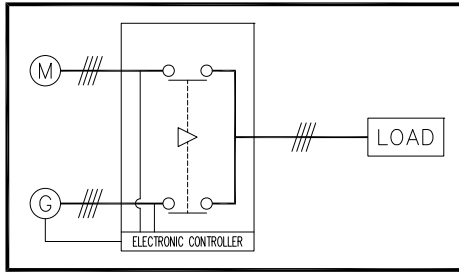
4 pole manual change over with I/O/II handle padlockable in off position suitable for top/bottom/both cable entry.

Options

Although both options are very flexible please contact us to make it better suit your application eg. more cabling room, supply isolation etc.



Rating		Size (HxWxD)	Cabling mm ² (MAX)	Price
40A	Manual	300 x 500 x 150	16	£178.88
	Automatic	400 x 500 x 150	10	£555.18
63A	Manual	300 x 500 x 150	35	£199.97
	Automatic	400 x 500 x 150	25	£585.53
125A	Manual	300 x 500 x 150	50	£414.92
	Automatic	400 x 600 x 200	50	£653.69
200A	Manual	400 x 600 x 200	95	£766.64
	Automatic	600 x 600 x 300	95	£890.24
400A	Manual	600 x 800 x 200	240	£1,052.75
	Automatic	600 x 1000 x 250	240	£1,311.17
700A	Manual	600 x 1000 x 300	2 x 300	£1,869.77
	Automatic	800 x 1200 x 300	2 x 240	£1,779.21
1000A	Manual	600 x 1200 x 300	4 x 185	£3,960.84
	Automatic	1000 x 1200 x 300	60 x 5 bar	£2,326.35
1250A	Manual	600 x 1200 x 300	4 x 185	£3,960.84
	Automatic	800 x 1600 x 400	100 x 5 bar	£6,102.65
1600 A	Manual	800 x 1200 x 400	6 x 185	£5,143.79
	Automatic	800 x 1600 x 400	100 x 5 bar	£8,160.65



Specification

Enclosure

Single Door

IP65 complying with EN50298:EN60529

Type 12, 4, 4X complying with UL508A; UL50

Impact resistance IK10 complying with EN500298; EN50102

Double Door

IP55 complying with EN50298; EN60529

Type 12, 4, 4X complying with UL508A; UL50

Impact resistance IK10 complying with EN500298; EN50102

Switches

40 & 63A

Conformity IEC 60947-3, EN 60947-3

125A to 1600A

Conformity IEC 60947-3, EN 60947-3, VDE 0600-107 (1992), NBN EN 60947-3,

BS EN 60947-3

Contactors

Conformity IEC/EN 60947-1

Approvals - IEC 158-1; VDE 0660; BS 5452; UL; CSA

Controller

Modular (6 modules) din rail mounting

Conformity

IEC 61010-1, IEC 61000-4-2, IEC61000-4-3, IEC 61000-4-4, IEC 61000-4-4,

IEC 61000-4-5, IEC 61000-4-6, IEC 61000-4-8, IEC 61000-4-11, IEC 60068-2-6, IEC60068-2-11, IEC

60068-2-30

Control Relays

Conforms to CE low voltage directive

Approvals - UL, VDE, CSA

Terminals

Din Rail mounting

EN 60947-7-1, DIN VDE 0611 T1, UL, CSA, KEMA, ATEX, FM, SEV, GL



Glenace | Unit 4 | Vector 31 | Network Centre | Waleswood Way | Walesbar | Sheffield | S26 5NU

tel: 01909 773344 | fax: 01909 773322 | Email: peteweston@glenace.co.uk

Registered in England No. 02815786